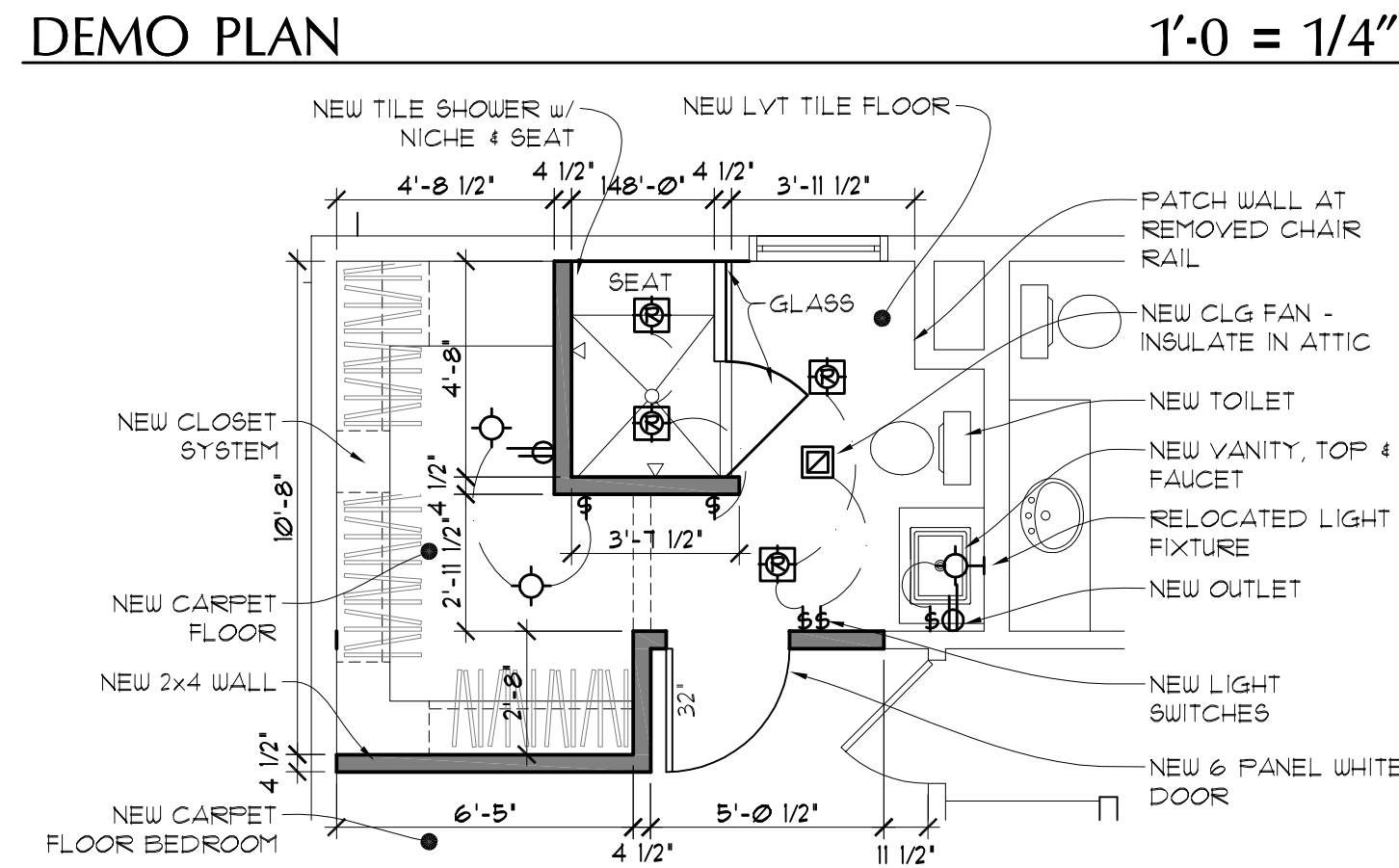
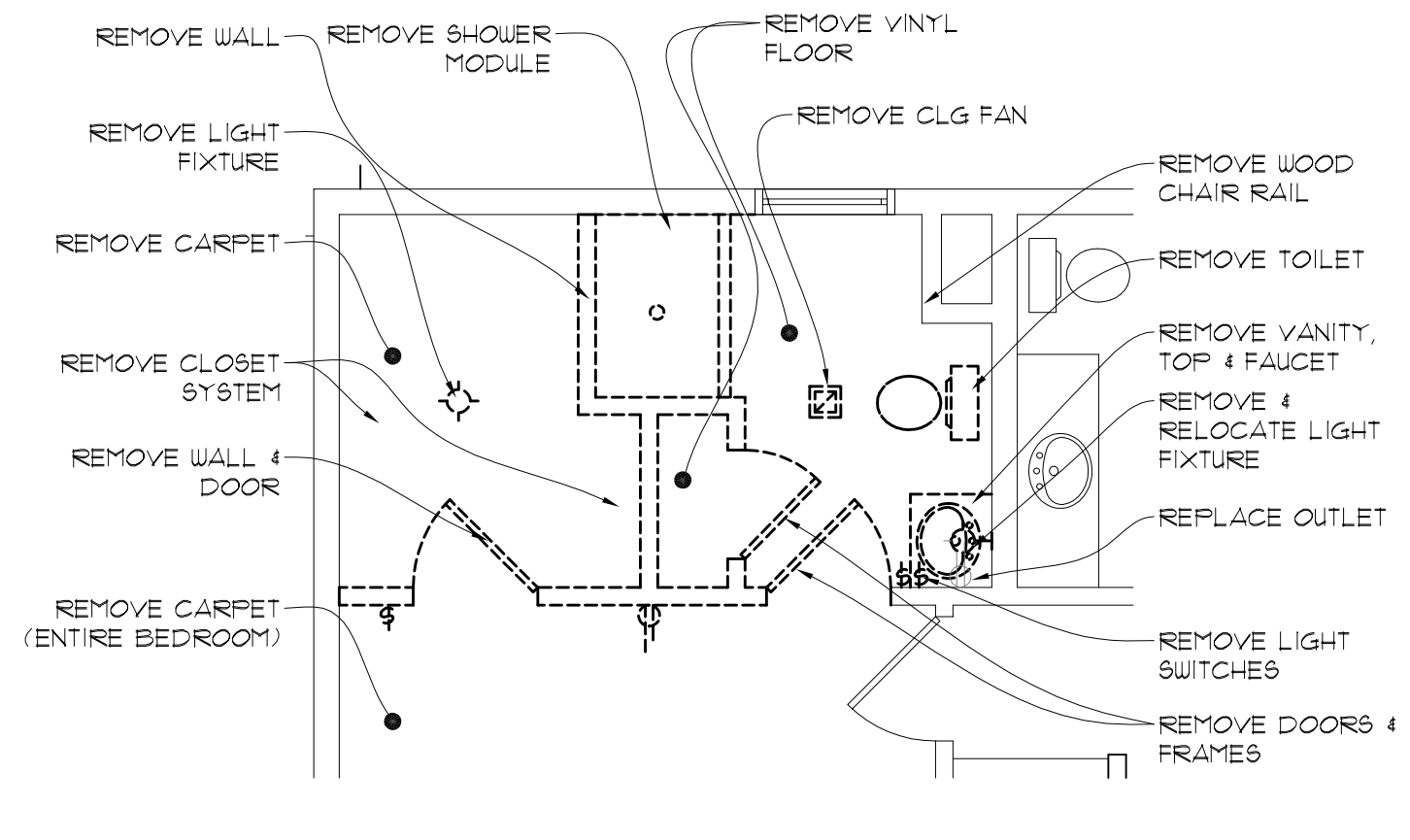
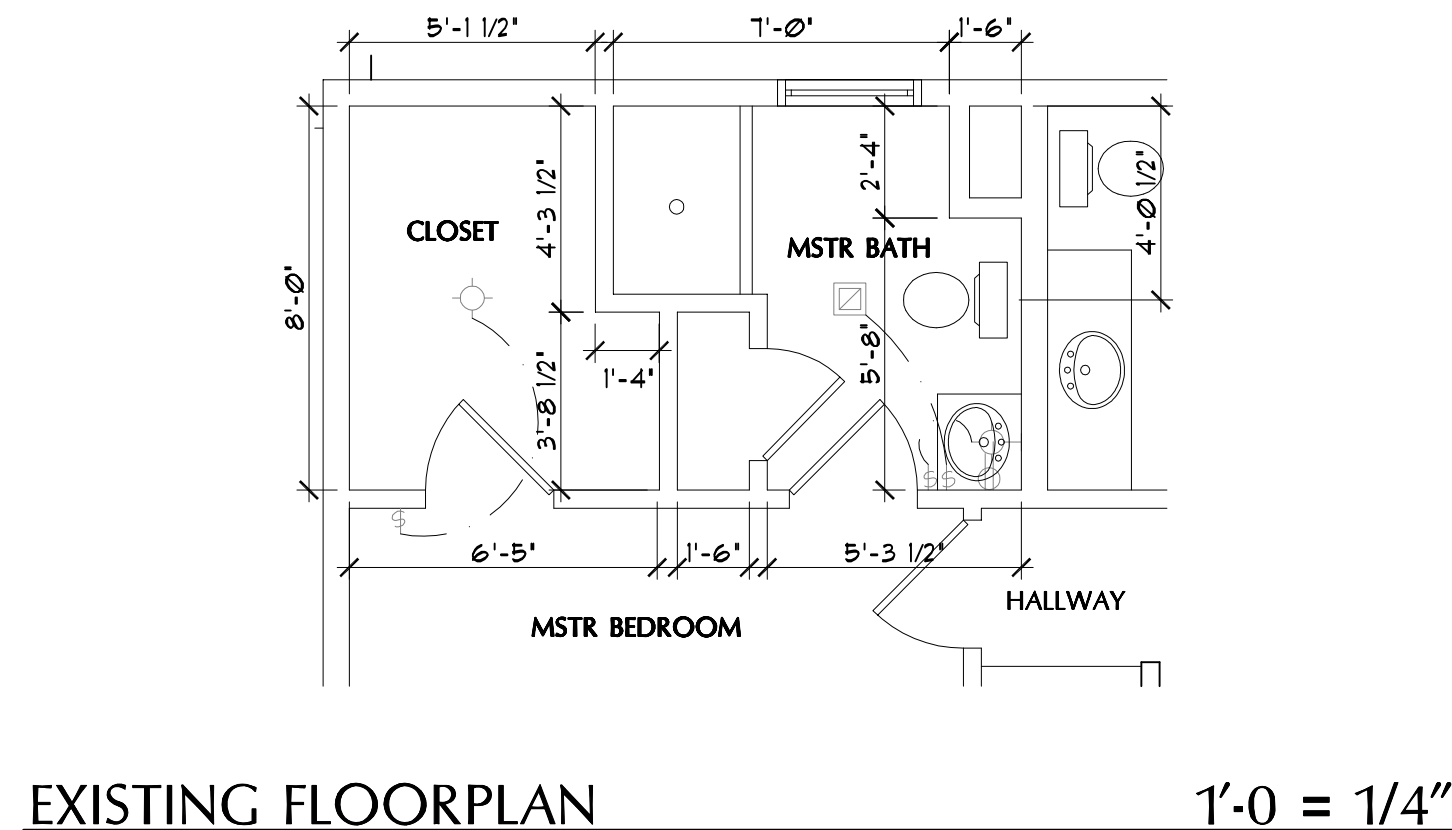


**GENERAL NOTES:**  
DO NOT SCALE DIMENSIONS FROM THE DRAWINGS. CONSULT THE DESIGNER WITH ANY QUESTIONS. FIELD VERIFY ALL DIMENSIONS AND CONDITIONS PRIOR TO FABRICATION OR INSTALLATION OF ANY PART OR COMPONENT.  
ALTHOUGH EVERY EFFORT HAS BEEN MADE IN PREPARING THESE PLANS AND CHECKING THEM FOR ACCURACY, THE CONTRACTORS MUST REVIEW ALL DETAILS OF THEIR TRADES AND BE RESPONSIBLE FOR THE SAME.

**DRYWALL NOTE:**  
DRYWALL ONLY TO BE REMOVED WHERE NECESSARY OR INDICATED ON PLAN. FULL EXPOSURE NOT NEEDED.



**BATH REMODEL - SAMPLE**  
12345 W. FUTURE AVE  
CITY, STATE 53111

DRAWN BY	JRS
REVIEWED BY	-
PRELIMINARY DWG	01 JUNE 2199
BID SET	-
CITY SUBMITTAL	-
REVISION DWG	-

COPYRIGHT 2017 - Drawings and Designs are protected by U.S. copyright law. Use or copy in part or whole of these drawings and/or designs without written authority by Source 1 Project Solutions, Inc. is prohibited.

PROJECT NO. **17.0000**  
DRAWING: **PLANS & INT ELEVATIONS**

SHEET NO. **01**